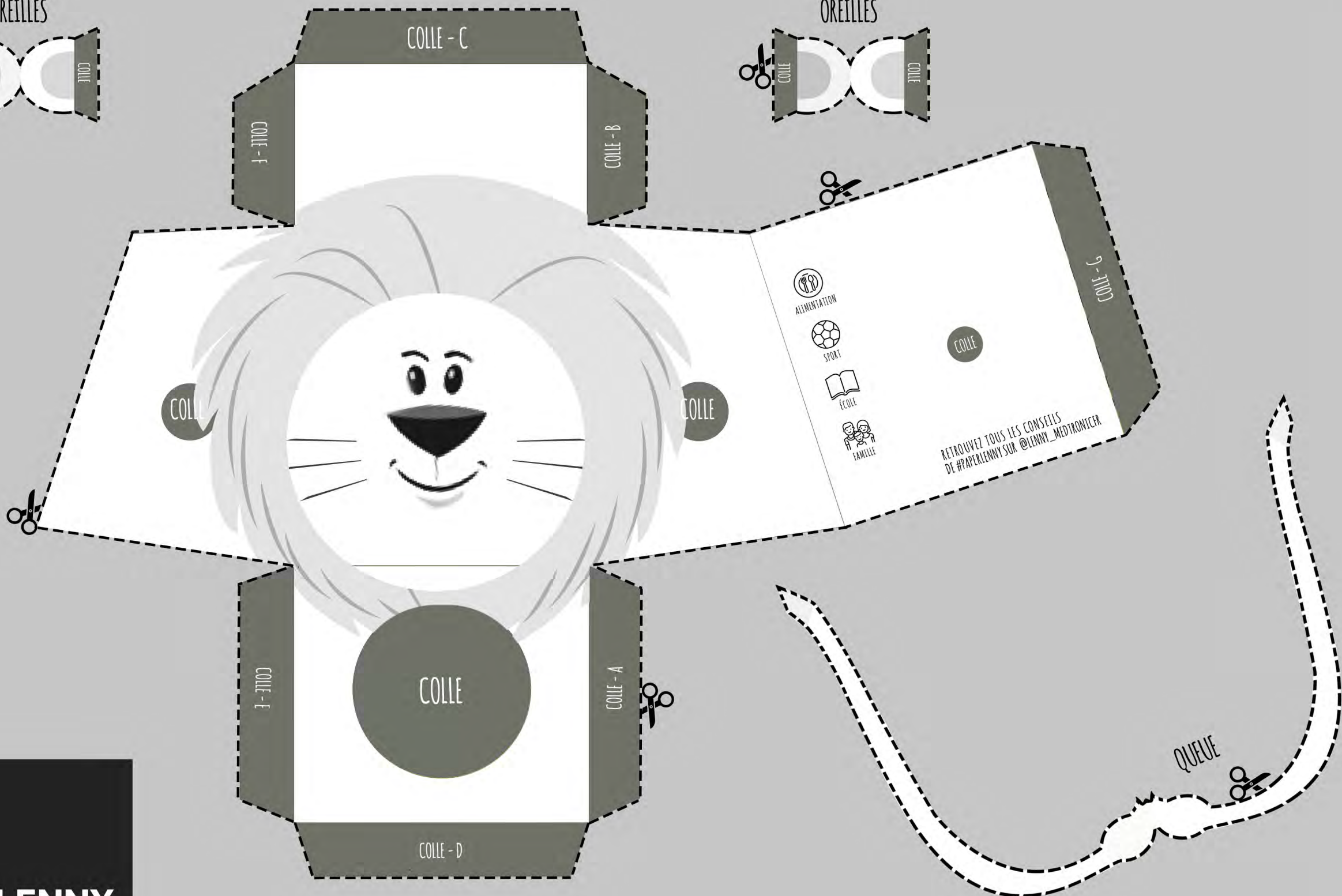
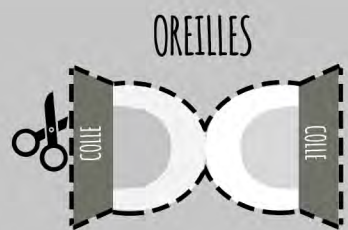


MEDTRONIC FRANCE S.A.S - 27 QUAI ALPHONSE LE GALLO - CS 30001 - 92513 BOULOGNE-BILLANCOURT CEDEX -
 RCS NANTERRE 722 008 232 - UC201908278FF - © Medtronic France. Créé en Janvier 2019. Tous droits réservés.
 Imprimé en France par RRDDonnelley - Tél. : 03 27 08 27 64 - Crédits photo Medtronic. Ne pas jeter sur la voie publique.

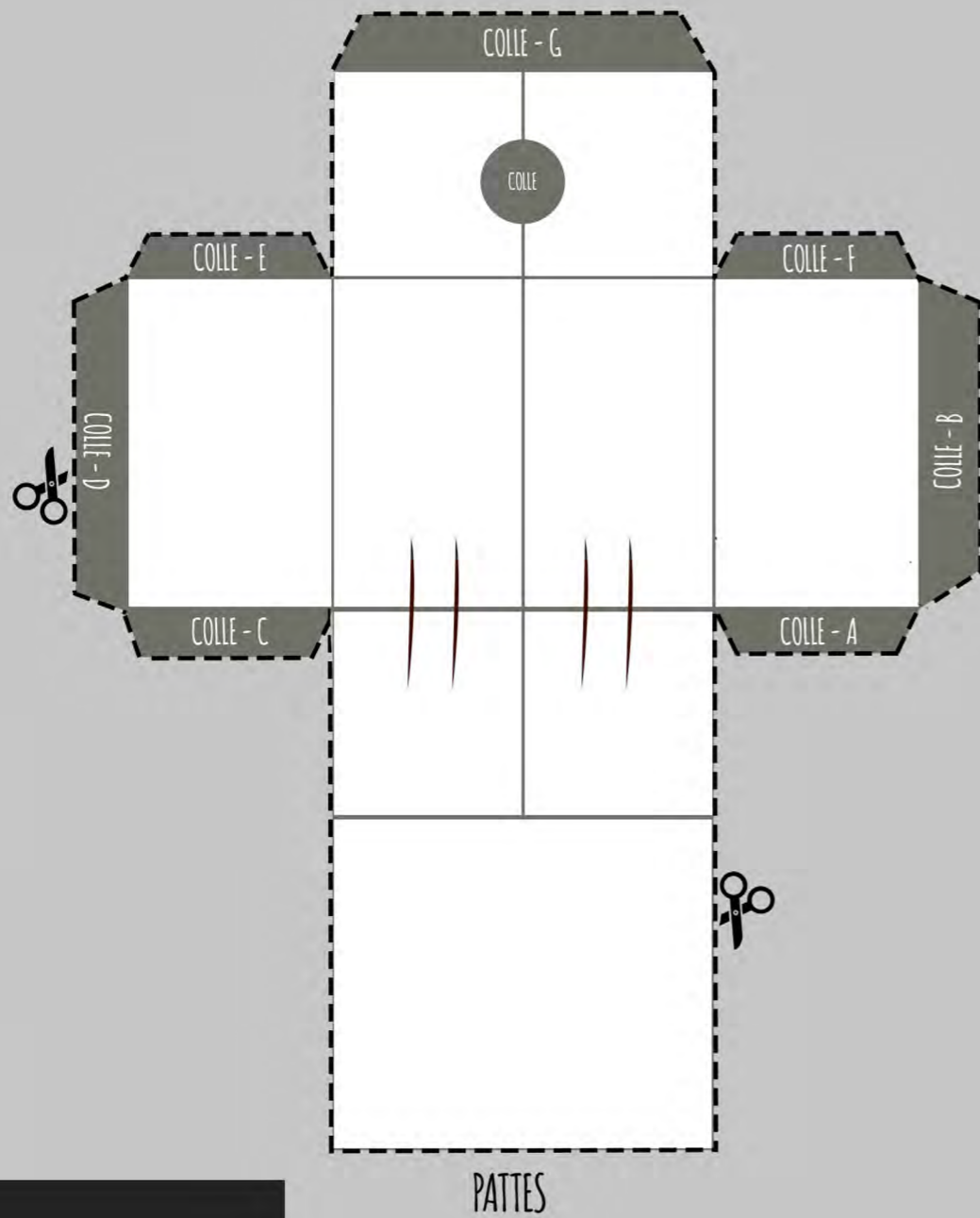


#PAPERLENNY
CORPS

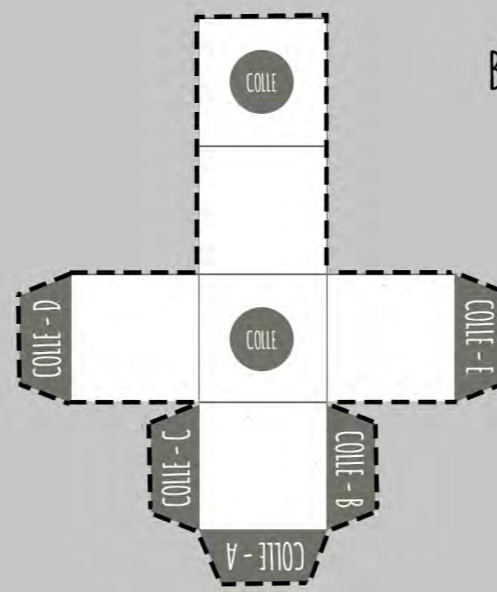
SUIVEZ LENNY™ SUR INSTAGRAM : @LENNY_MEDTRONICFR



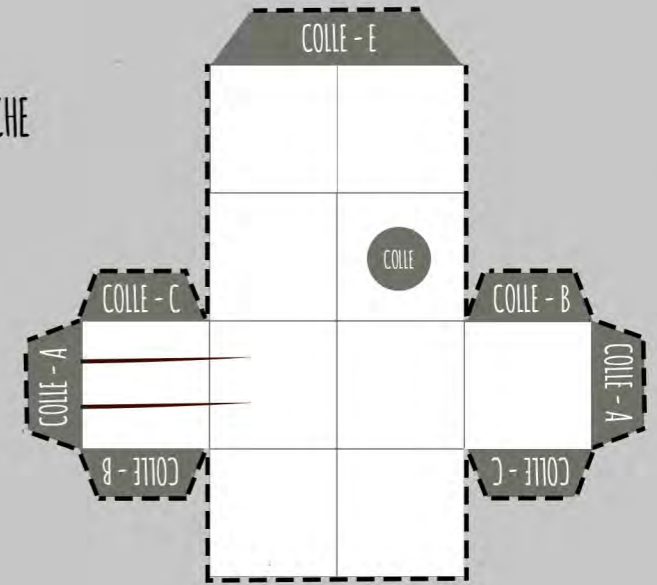
Medtronic



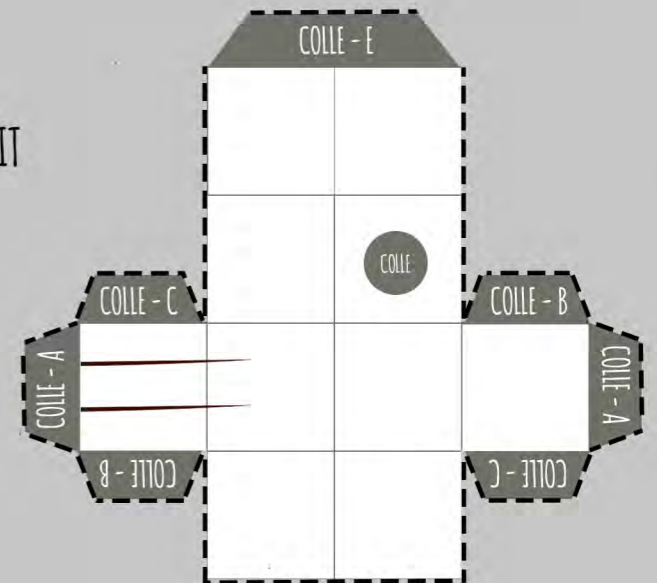
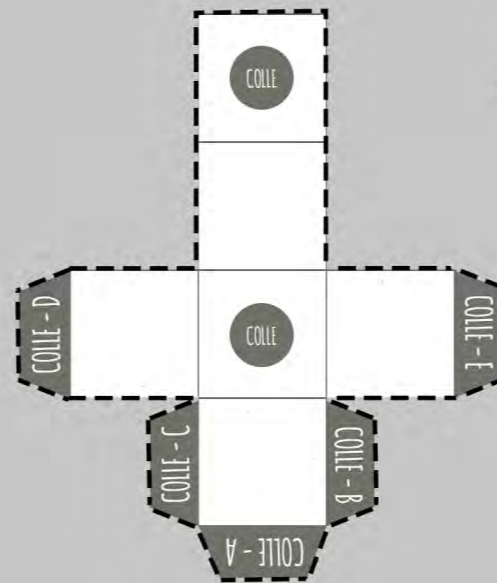
PATTES



BRAS GAUCHE



BRAS DROIT



#PAPERLENNY
BRAS ET PATTES

SUIVEZ LENNY™ SUR INSTAGRAM : @LENNY_MEDTRONICFR



Medtronic